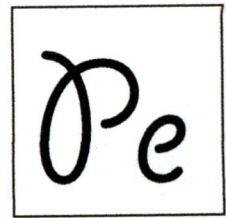




**Kudzu CrossFit & Pruitt Enterprise, LLC**

From the office of Stephen Pruitt



**From: Kudzu CrossFit  
113 Dees Drive Suite B  
Madison MS 39110**

**To: Madison Count Planning and Zoning  
125 West North Street  
P.O. Box 608  
Canton MS 39046**

**Trusted County Officials:**

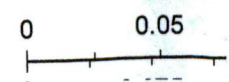
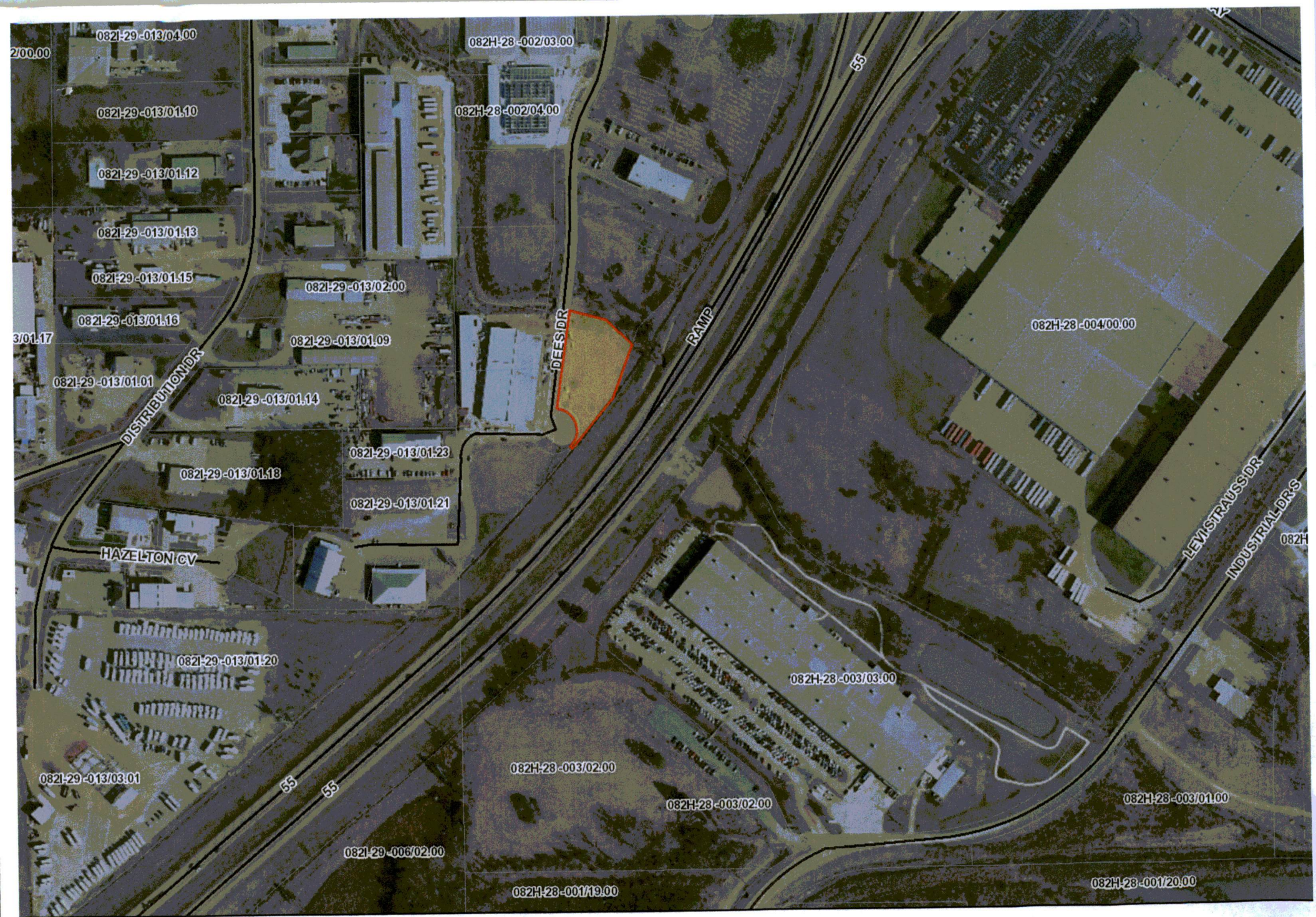
Almost two years ago, I moved back to my home of Madison/Gluckstadt from serving in the Air Force. I was an ambitious young man with dreams of being a respectable entrepreneur and successful leader in my home town community. Now, after many months of learning and growing, Kudzu CrossFit has an expansive membership and a need for more space. I stand humbly in front of the largest challenge and key point in my dream: commercial property ownership.

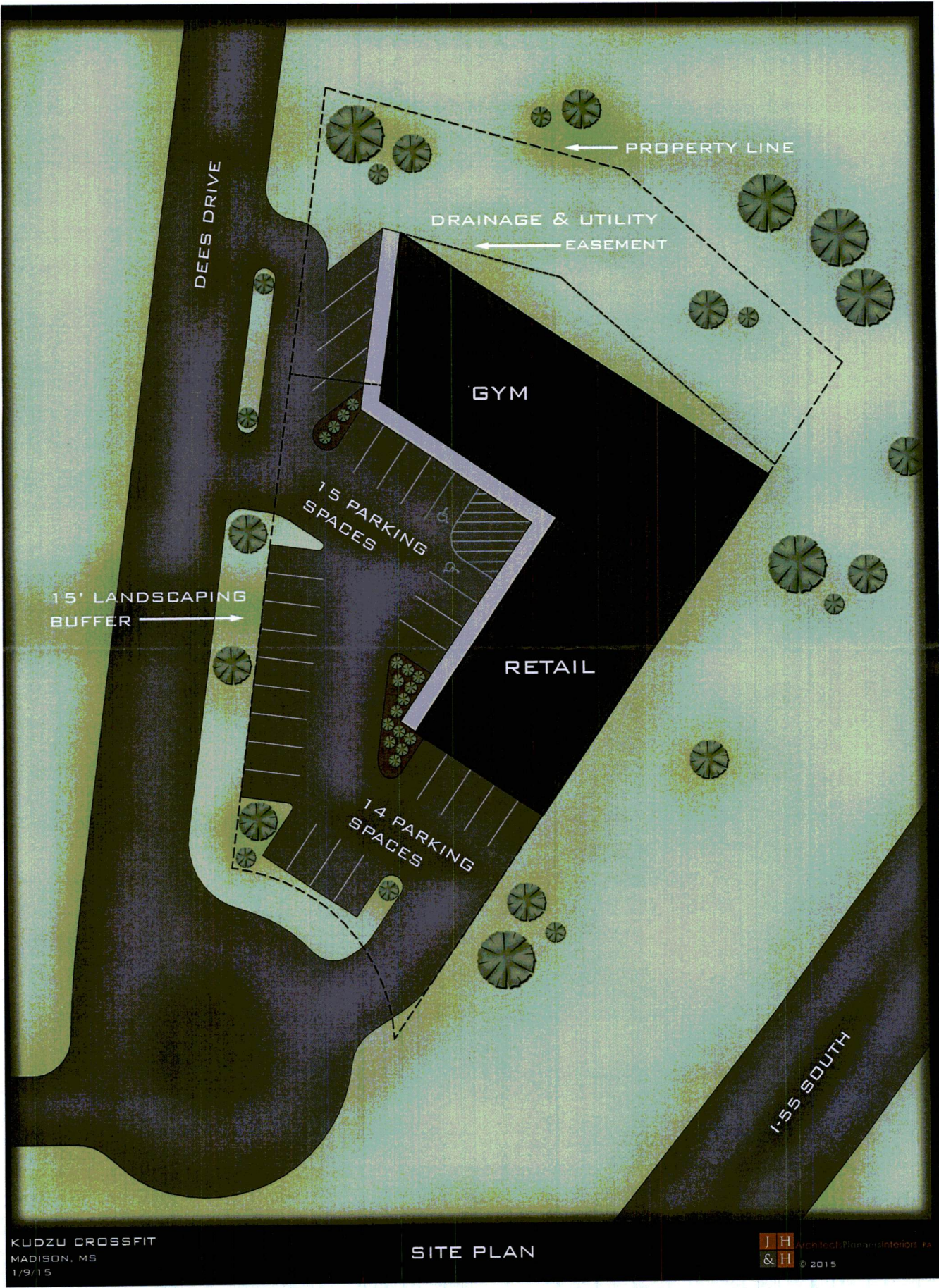
CrossFit is a growing and thriving methodology for strength and condition of athletes as well as general health and wellness for "Average Joes" like me. My plan of moving back here to spread the good word of true health is coming to fruition daily. Our new facility design will double our equipment floor space and provide a larger, more equipped ancillary space. We will be able to take on more business and train larger groups such as entire youth sports teams. We will be able to host popular performance seminars and competitions that will bring in visitors thereby increasing traffic to our neighborhood restaurants, hotels and other businesses. Additionally, our new building will provide approximately 4,000 square feet of space for other businesses to occupy and thrive!

Ultimately, my goal is to perpetuate good business in Madison County. This development will give me the opportunity to do so and to get a better understanding of yours and the community's wants and needs. I respectfully request your support of our growth and your approval on this project.

Best regards,

**Stephen Pruitt, MS, CES**  
Owner/Operator - Kudzu CrossFit  
113 Dees Drive Suite B  
Madison MS 39110  
Cell: 601.715.0145

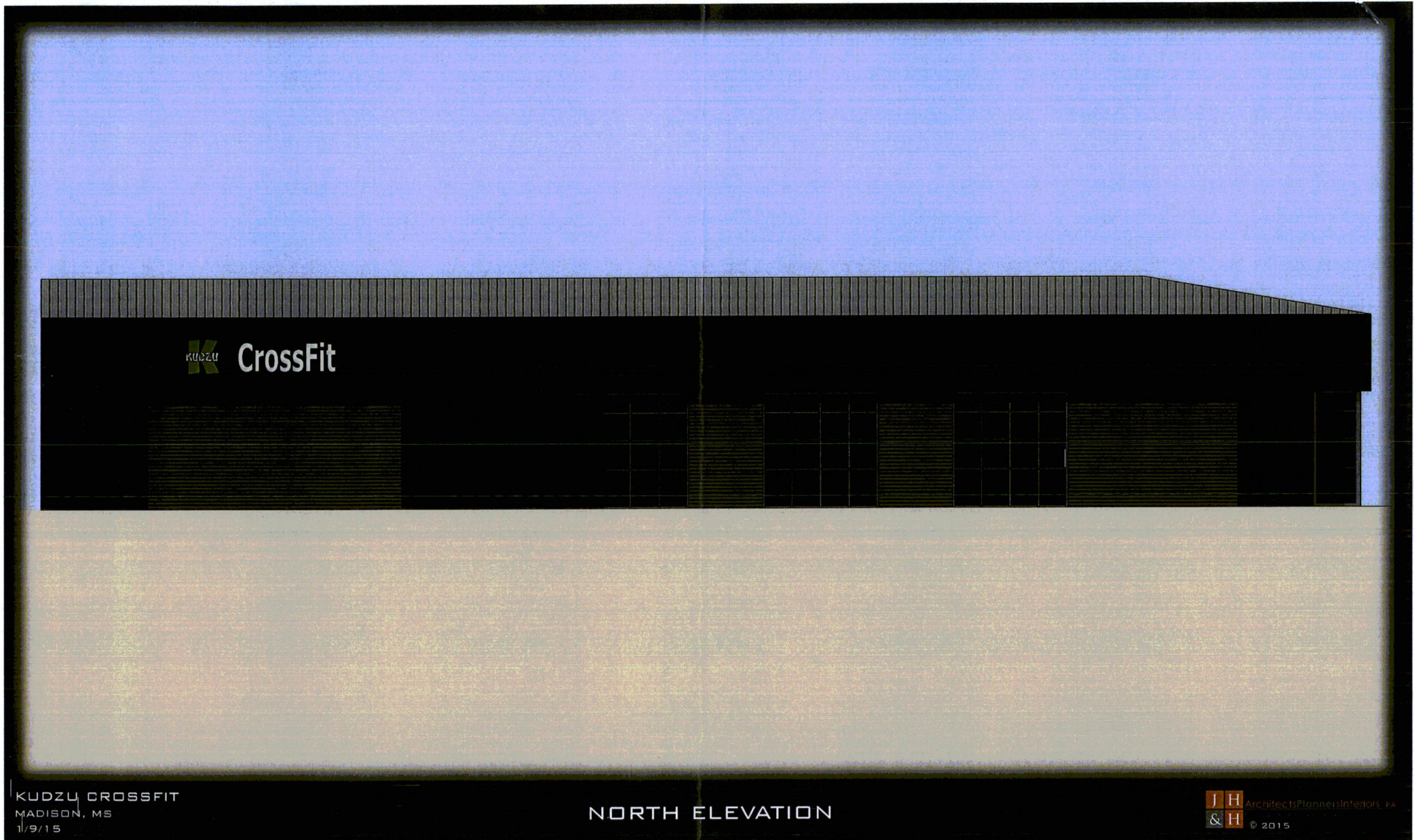




KUDZU CROSSFIT  
MADISON, MS  
1/9/15

SITE PLAN

JH Architect, Planner, Interior, PA  
&H © 2015



KUDZU CROSSFIT  
MADISON, MS  
1/9/15

NORTH ELEVATION

JH ArchitectsPlannersInteriors PA  
&H © 2015



KUDZU CROSSFIT  
MADISON, MS  
1/9/15

EXTERIOR RENDERING

J H Architects Planners Interiors, PA  
& H © 2015